

# LZL 05 – Stainless Steel Air Motor

Powerful performers in tough environments



## An investment that works for you



However demanding your process, Atlas Copco stainless steel air motors offer efficient, reliable operation and long working lives. Strict hygiene requirements, hazardous or corrosive environments, heat, vibration or knocks pose no problems for these hard-working motors.

The new LZL models are lubrication free, ensuring a cleaner working environment. Simple to service, and highly reliable, they are an excellent solution for precise mixing of chemicals, pharmaceuticals and paint. They are also a light, efficient power source for general applications.

Backed by the know-how, experience and global presence of the world's leading manufacturer of industrial tools, Atlas Copco stainless steel air motors are an investment that works for you.

*Atlas Copco*

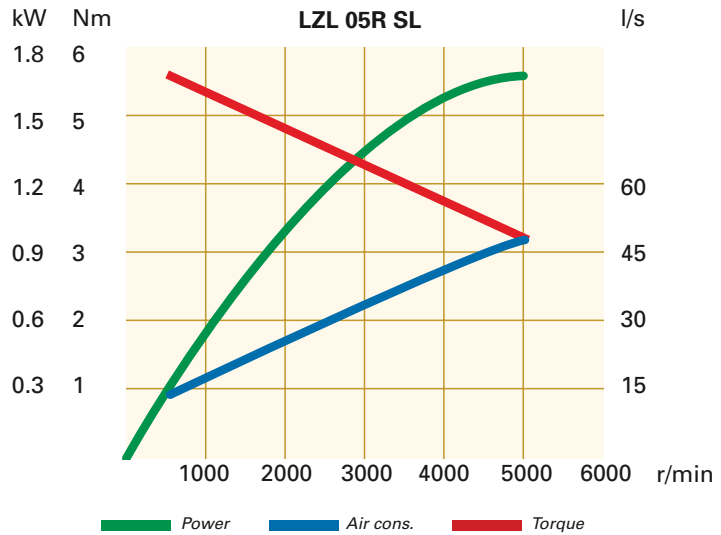
# LZL 05 – Stainless Steel Air Motor



Photo by DRUM-MATES, Inc

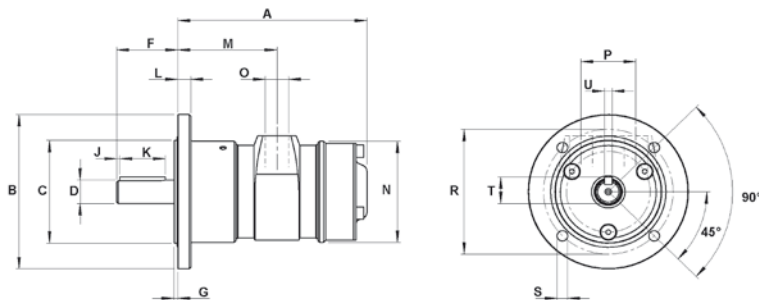
LZL 05R SL is EX-certified to level Ex II 2G T4 IIC D110°C according to the ATEX directive.

NOTE: Max allowed speed for the motor is 5000 r/min.



## Technical data

Model	Max output		Speed at max output	Torque at max output		Min Starting torque		Max allowed Speed	Air cons. at max output		Weight		Ordering No.
	kW	hp	r/min	Nm	lbf.ft	Nm	lbf.ft	r/min	l/s	cfm	kg	lb	
LZL 05R SL-IEC	1.7	2.2	5000	3	2.2	4.8	3.5	5000	48	101	3.9	8.6	8411 1008 44
LZL 05R SL-Nema	1.7	2.2	5000	3	2.2	4.8	3.5	5000	48	101	3.9	8.6	8411 1008 36



## Dimensions (mm)

	A	B	C	D	F	G	J	K	L	M	N	O	P	R	S	T	U
LZL 05R SL-IEC	146.7	Ø160	Ø110 js7	Ø14 js7	30	3.5	2	20	12.5	74.7	Ø83	G 1/2"	44	Ø130	Ø10	16	5 h9
LZL 05R SL-Nema	146.7	Ø165.1	Ø114.3	Ø15.875	51.5	3	1.7	31.75	12.5	74.7	Ø83	G 1/2"	44	Ø149.4	3/8"-16 UNC	17.95	4.75 h9

Conversion factor 1 mm = 0.04 inch

Atlas Copco

www.atlascopco.com